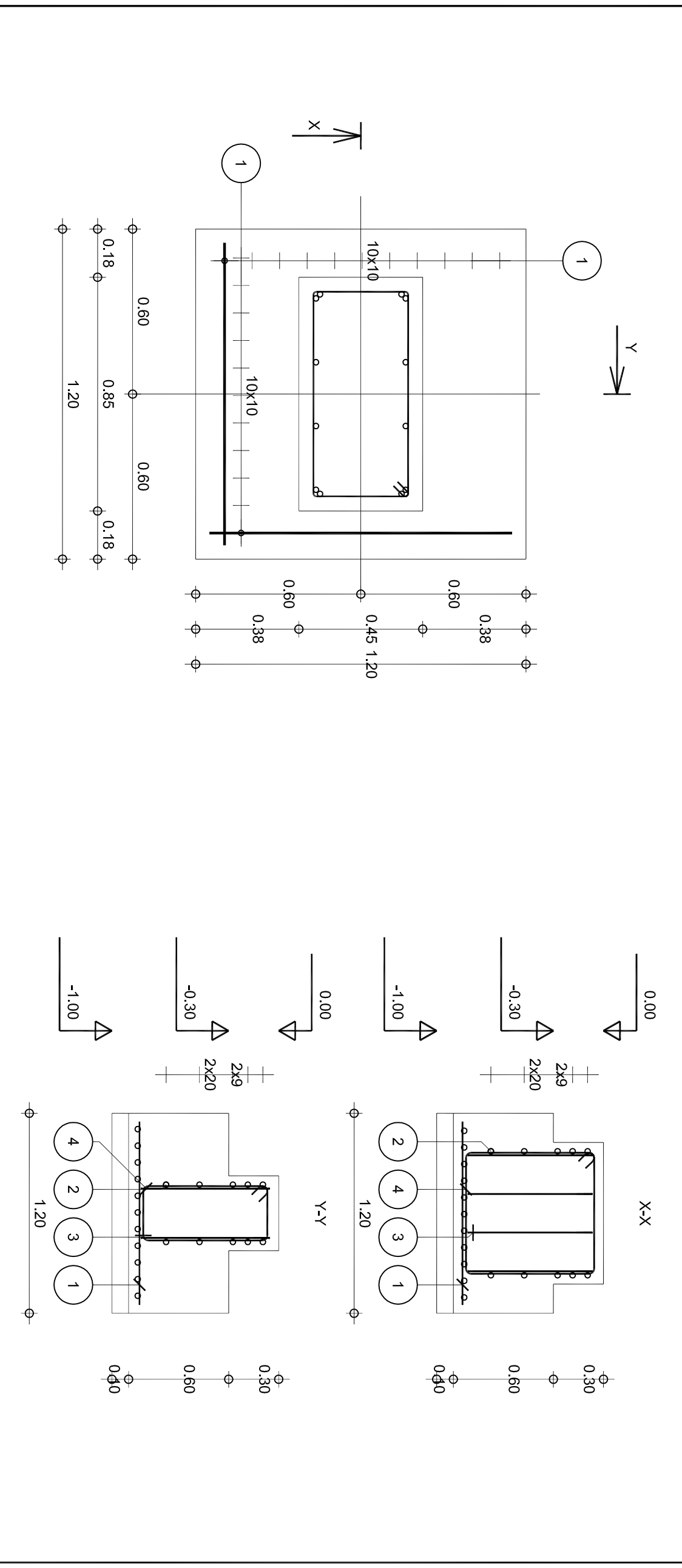
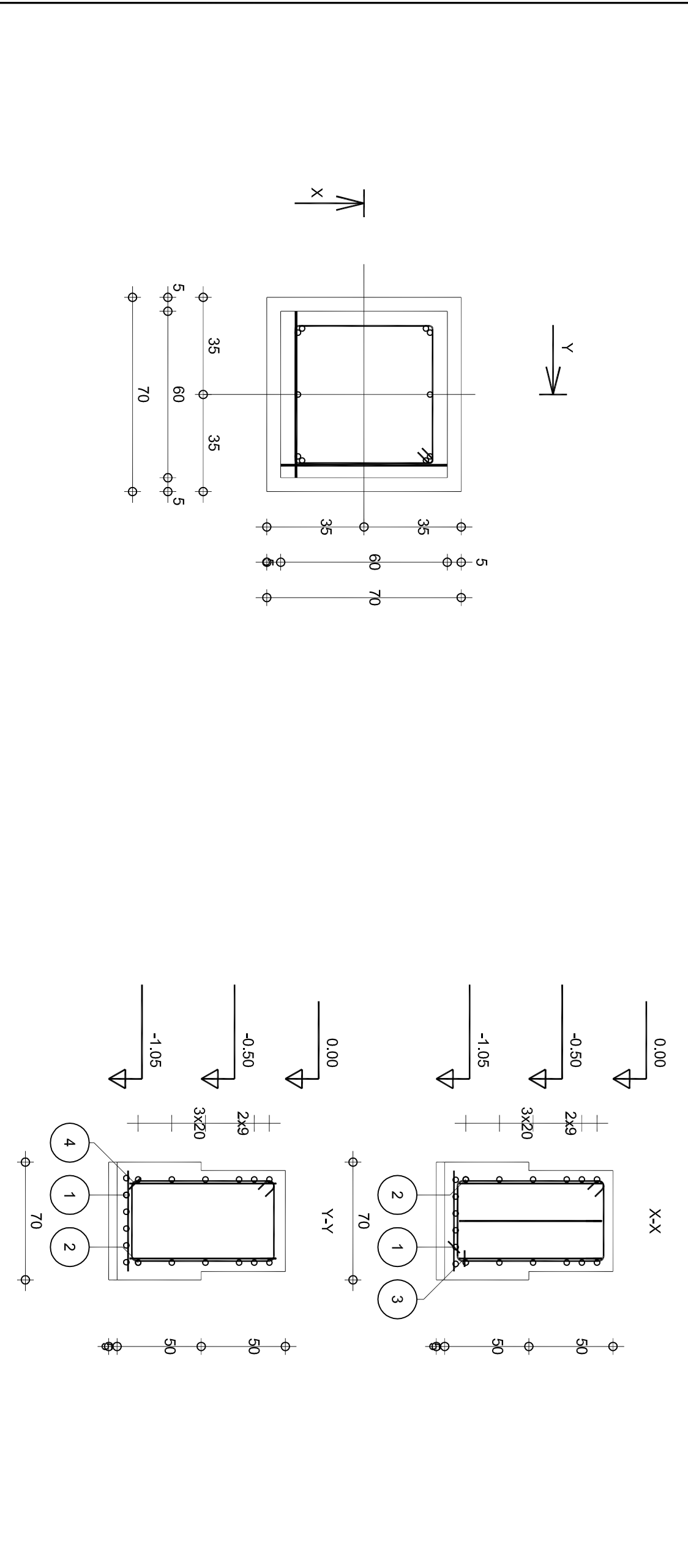
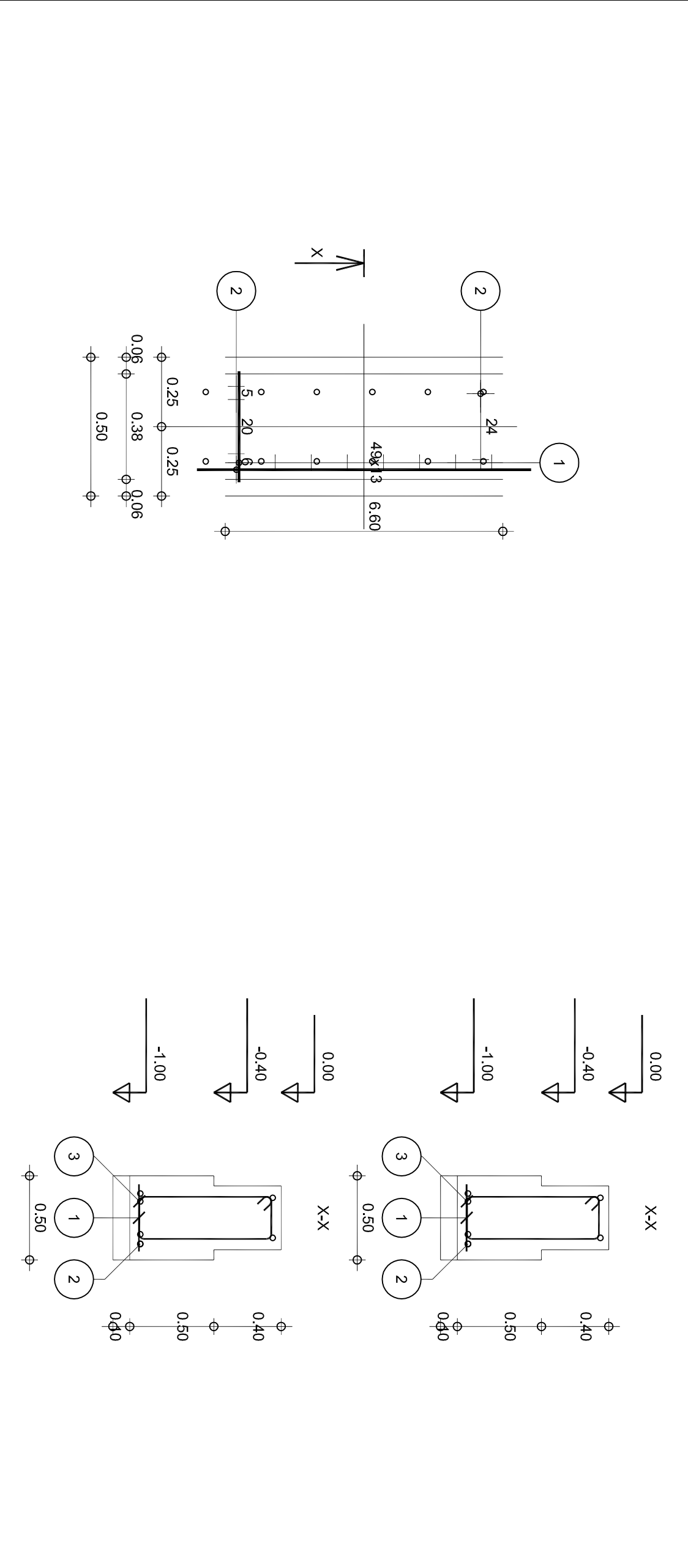


Posz.	Zmierzanie	Kształt	Stal
1	50 Ø 10	F=0.40	A-III (C40S)
2	6 Ø 8	I=0.50	A-III (C40S)
3	33 Ø 6	I=2.21	A-I (PB240)

Posz.	Zmierzanie	Kształt	Stal
1	12 Ø 10	F=0.60	A-III (C40S)
2	6 Ø 8	I=2.09	A-I (PB240)
3	3 Ø 12	I=2.80	A-I (PB240)

Posz.	Zmierzanie	Kształt	Stal
1	22 Ø 10	F=1.10	A-III (C40S)
2	5 Ø 8	I=2.49	A-I (PB240)
3	4 Ø 12	I=2.30	A-I (PB240)



Posz.	Zmierzanie	Kształt	Stal
1	50 Ø 10	F=0.40	A-III (C40S)
2	6 Ø 8	I=0.50	A-III (C40S)
3	33 Ø 6	I=2.21	A-I (PB240)

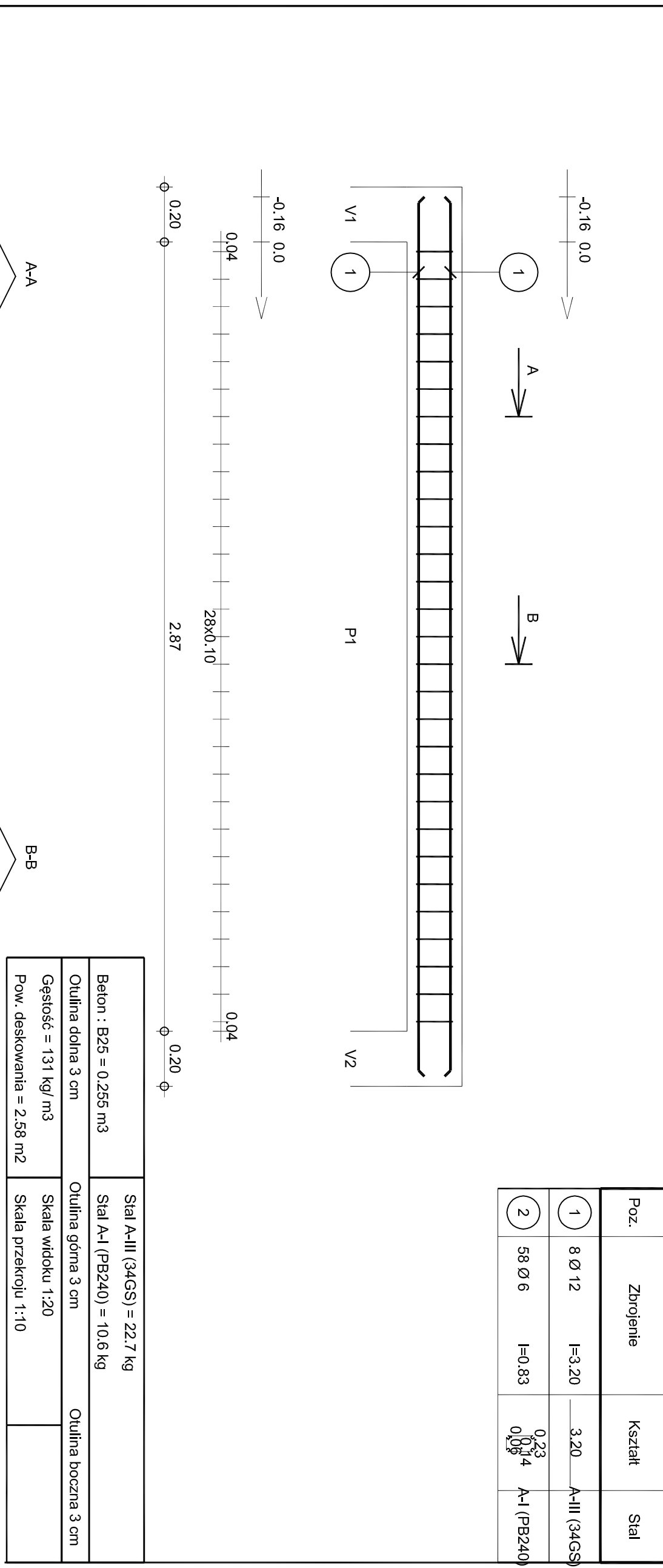
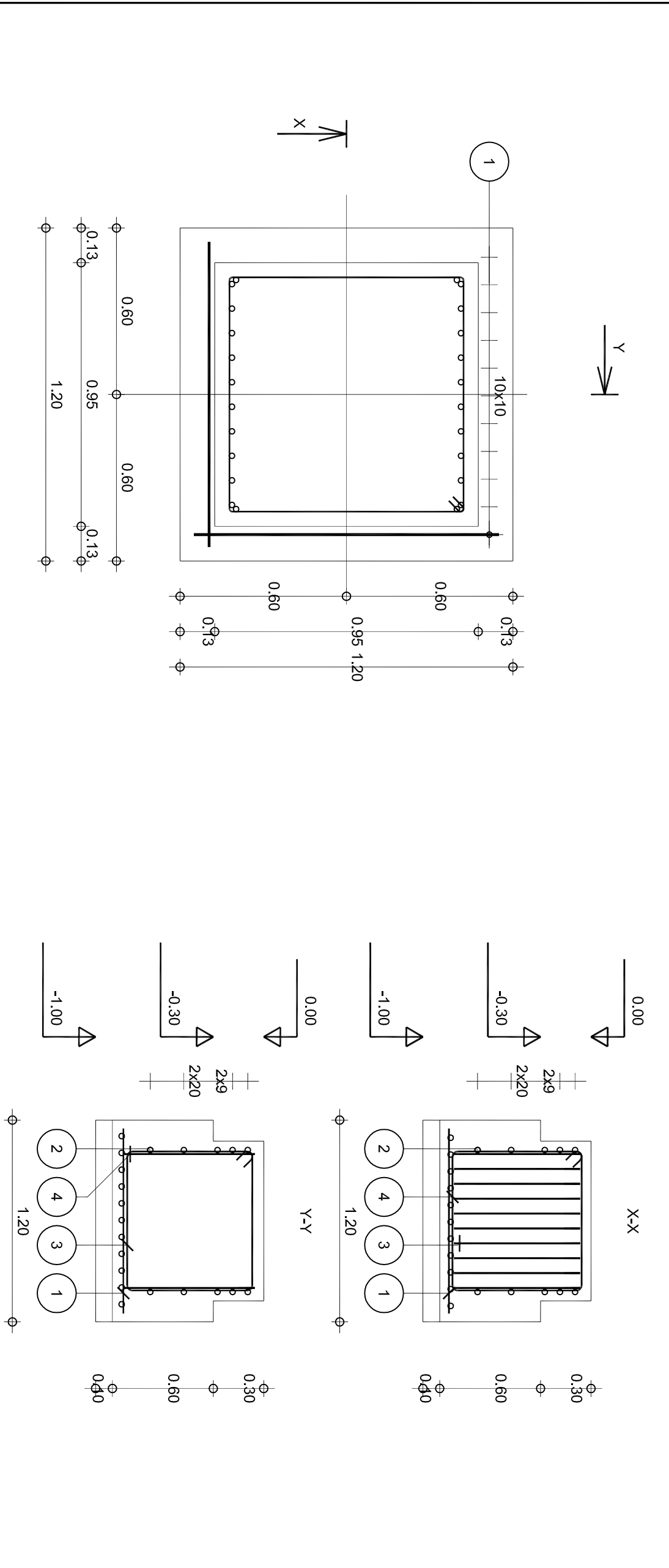
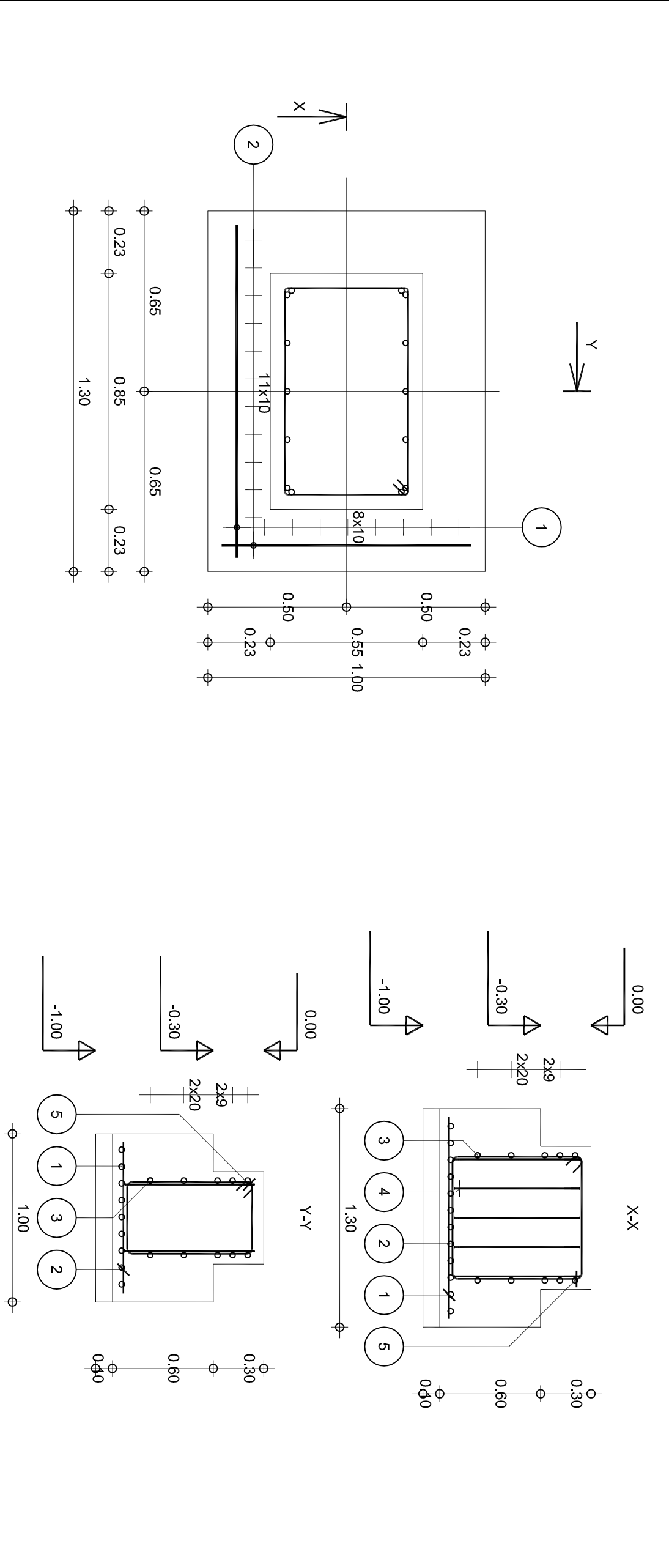
Posz.	Zmierzanie	Kształt	Stal
1	12 Ø 10	F=0.60	A-III (C40S)
2	6 Ø 8	I=2.09	A-I (PB240)
3	3 Ø 12	I=2.80	A-I (PB240)

Posz.	Zmierzanie	Kształt	Stal
1	22 Ø 10	F=1.10	A-III (C40S)
2	5 Ø 8	I=2.49	A-I (PB240)
3	4 Ø 12	I=2.30	A-I (PB240)

Posz.	Zmierzanie	Kształt	Stal
1	50 Ø 10	F=0.40	A-III (C40S)
2	6 Ø 8	I=0.50	A-III (C40S)
3	33 Ø 6	I=2.21	A-I (PB240)

Posz.	Zmierzanie	Kształt	Stal
1	12 Ø 10	F=0.60	A-III (C40S)
2	6 Ø 8	I=2.09	A-I (PB240)
3	3 Ø 12	I=2.80	A-I (PB240)

Posz.	Zmierzanie	Kształt	Stal
1	22 Ø 10	F=1.10	A-III (C40S)
2	5 Ø 8	I=2.49	A-I (PB240)
3	4 Ø 12	I=2.30	A-I (PB240)



Posz.	Zmierzanie	Kształt	Stal
1	9 Ø 10	F=1.20	A-III (C40S)
2	12 Ø 10	I=0.90	A-III (C40S)
3	5 Ø 6	I=2.49	A-I (PB240)

Posz.	Zmierzanie	Kształt	Stal
1	22 Ø 10	F=1.10	A-III (C40S)
2	5 Ø 8	I=2.49	A-I (PB240)
3	10 Ø 12	I=3.30	A-I (PB240)

Posz.	Zmierzanie	Kształt	Stal
1	22 Ø 10	F=1.10	A-III (C40S)
2	5 Ø 8	I=2.49	A-I (PB240)
3	10 Ø 12	I=3.30	A-I (PB240)